
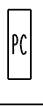
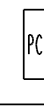

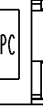

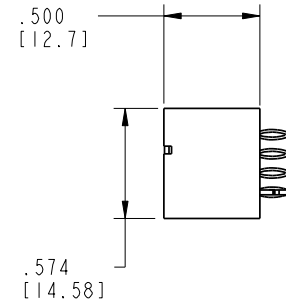
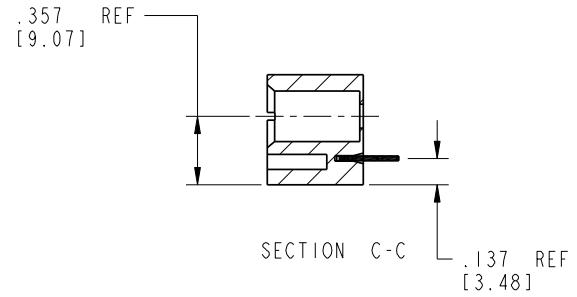
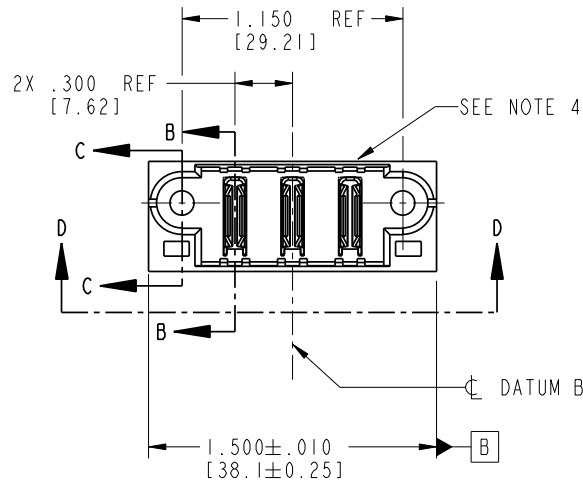


Tous droits strictement réservés. Reproduction ou communication o des liers interdite sous quelque forme que ce soit sans autorisation écrite du propriétaire. Propriété de c FCI. Droits de reproduction FCI.


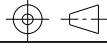
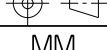
All rights strictly reserved. Reproduction or issue to third parties in any form whatever is not permitted without written authority from the proprietor. Property of FCI. Copyright FCI.

FCI

PRODUCT NO. 51916-001-- NOTE: ③	POWER				
	E1	P1	P2	P3	E2
					



CODE	DIM "M" MATING LENGTH	CONTACT TYPE
PC	N/A [N/A]	POWER
HA	N/A [N/A]	HOLD-DOWN

mat'l code				SEE NOTE 2		tolerances unless otherwise specified		CUSTOMER		 www.fciconnect.com	
lir	ecn no.	dr	date	linear	.XX±.01/0.X±0.3		COPY		title		
A	V20405	DA1	02/26/02		.XXX±.005/0.XX±0.13		projection		3P		
B	V21104	TAB	10/02/02		.XXX±.0020/0.XXX±0.051				VERTICAL PRESS-FIT HEADER		
C	DG05-0227	SJ	07/15/05		angles				product family		
D	DG06-0005	JMG	01/07/06	dr	D. INGRAM	02/26/02	MM		PwrBlade		code
				enr	J. SWAIN	02/26/02	scale		size	dwg no	213
				chr	J. SWAIN	02/26/02	1:1		A	51916-001	sheet
				appd	J. SWAIN	02/26/02			1 of 4		
sheet index	revision sheet	D	D	D	D	D					
		1	2	3	4						

Pro/E

PDM: Rev: D

STAT **US: Released**

Printed: Aug 15, 2007

Tous droits strictement réservés. Reproduction ou communication o des liers interdite sous quelque forme que ce soit sans autorisation écrite du propriétaire. Propriété de c FCI. Droits de reproduction FCI.

All rights strictly reserved. Reproduction or issue to third parties in any form whatever is not permitted without written authority from the proprietor. Property of FCI. Copyright FCI.

FCI

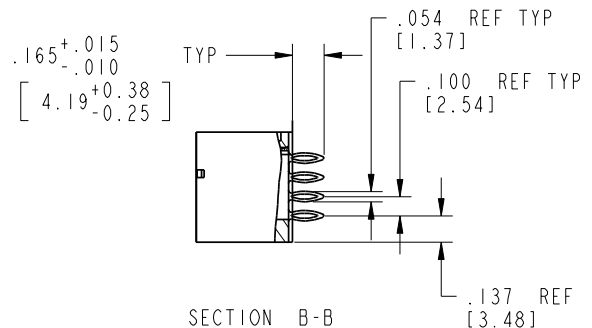
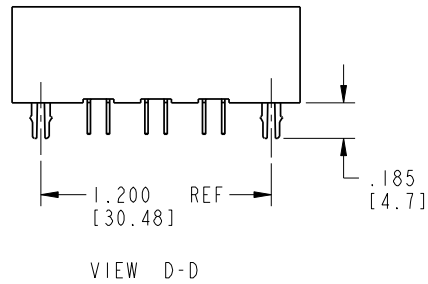
PRODUCT NUMBER

51916-001--
NOTE: ③

1 | 2

3 |

4



mat'l code		SEE NOTE 2		tolerances unless otherwise specified		CUSTOMER		 www.fciconnect.com		
lir	ecn no.	dr	date	linear	.XX±.01/0.X±0.3		projection	title		
D					.XXX±.005/0.XX±0.13			 MM	3P VERTICAL PRESS-FIT HEADER	
				angles	.XXX±.0020/0.XXX±0.051		scale		product family	
				dr	0°±2°			1:1	PwrBlade	
				enr	D. INGRAM	02/26/02	size		code	
				chr	J. SWAIN	02/26/02		A	213	
				appd	J. SWAIN	02/26/02	dwg no		sheet	
sheet index		revision sheet						51916-001		?

1 | 2

Pro/E

PDM: Rev: D

STAT **US: Released**

code code 22556 4 Printed: Aug 15, 2007

A

A

B

B

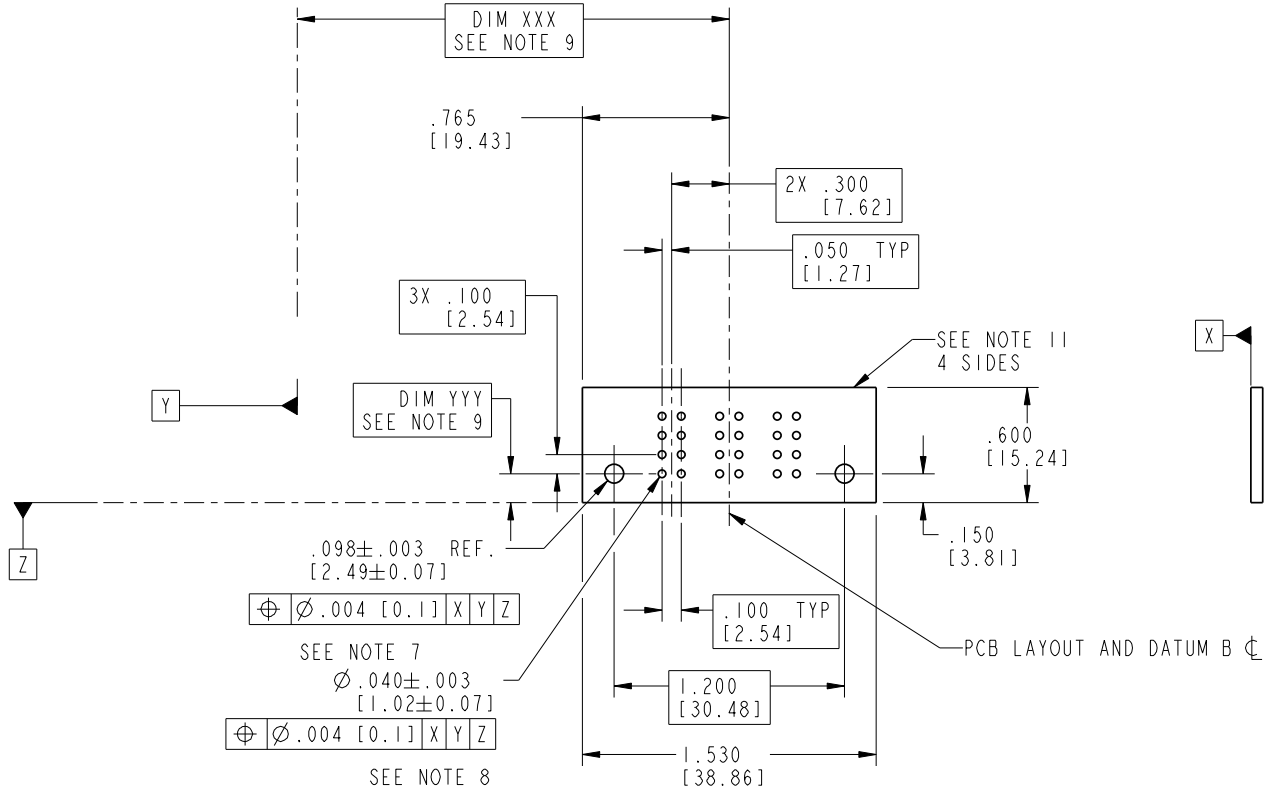
Tous droits strictement réservés. Reproduction ou communication o des liers interdite sous quelque forme que ce soit sans autorisation écrite du propriétaire. Propriété de c FCI. Droits de reproduction FCI.

FCI

All rights strictly reserved. Reproduction or issue to third parties in any form whatever is not permitted without written authority from the proprietor. Property of FCI. Copyright FCI.

PRODUCT NUMBER

51916-001--
NOTE: ③



mat'l code		SEE NOTE 2		tolerances unless otherwise specified		CUSTOMER		FCI		www.fciconnect.com	
lir	ecn no.	dr	date	linear	.XX±.01/0.X±0.3	projection	COPY		title		
D				angles	.XXY±.005/0.XX±0.13	⊕ ⊖	3P		VERTICAL PRESS-FIT HEADER		
				dr	.XXX±.0020/0.XXX±0.051	MM	product family		PwrBlade		code
				enr	D. INGRAM 02/26/02	scale	size		dwg no		213
				chr	J. SWAIN 02/26/02	1:1	A		51916-001		sheet
				appd	J. SWAIN 02/26/02						3
sheet index	revision sheet										

Pro/E

PDM: Rev: D

STAT **US: Released**

Printed: Aug 15, 2007

Tous droits strictement réservés. Reproduction ou communication a des tiers interdite sous quelque forme que ce soit sans autorisation écrite du propriétaire. Propriété de c FCI. Droits de reproduction FCI.

A FCI

All rights strictly reserved. Reproduction or issue to third parties in any form whatever is not permitted without written authority from the proprietor. Property of FCI. Copyright FCI.

B

1 | 2

3 |

4

A

B

PRODUCT NUMBER

51916-001--
NOTE: ③

NOTES:


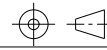

1. DIMENSIONS AND TOLERANCES ARE IN ACCORDANCE WITH ASME Y14.5M, 1994 UNLESS OTHERWISE SPECIFIED.

CONNECTOR NOTES:

- 2. HOUSING MATERIAL: UL 94 V-0 GLASS FILLED HIGH TEMP THERMO PLASTIC
POWER CONTACT MATERIAL: COPPER ALLOY
SIGNAL PIN MATERIAL: COPPER ALLOY
- 3. 51916-001;51916-001LF;51916-001GLF PLATING SPEC. SEE PRINT:10064183
- 4. "MANUFACTURER" NAME, P/N, AND DATE CODE TO APPEAR ON THIS SURFACE.
- 5. PRODUCT SPECIFICATION GS-12-149.

PCB NOTES:

- 6. ALL HOLE DIAMETERS ARE FINISHED HOLE SIZE.
- 7. MOUNTING HOLES ARE UNPLATED.
- 8. $\varnothing .0453 \pm 0.0010$ [1.151 \pm 0.025] DRILLED HOLES PLATED WITH 0.0003 [0.008] MIN SnPb OVER .001 [0.03] TO .003 [0.08] Cu PLATING TO ACHIEVE $\varnothing .040 \pm .003$ [1.02 \pm .07] HOLE.
- 9. "DIM XXX" AND "YYY" TO BE DETERMINED BY THE CUSTOMER.
- 10. FOR PRESS FIT APPLICATION USE FCI CAM TOOL 430169-XXX.
- 11. CONNECTOR KEEP-OUT ZONE

mat'l code				SEE NOTE 2		tolerances unless otherwise specified		CUSTOMER		 www.fciconnect.com			
lir	ecn no.	dr	date	linear	.XX±.01/0.X±0.3		projection	COPY		title	3P VERTICAL PRESS-FIT HEADER		
D					.XXX±.005/0.XX±0.13				product family			code	
					.XXXX±.0020/0.XXX±0.051				PwrBlade				213
				angles	$0^{\circ} \pm 2^{\circ}$		 INCH/MM	size		sheet			
				dr	D. INGRAM	02/26/02		A			4		
				enr	J. SWAIN	02/26/02		51916-001					
				chr	J. SWAIN	02/26/02		scale					
				appd	J. SWAIN	02/26/02	1:1						
sheet index		revision sheet											

1 | 2

Pro/E

PDM: Rev: D

STAT **US: Released**

Printed: Aug 15, 2007